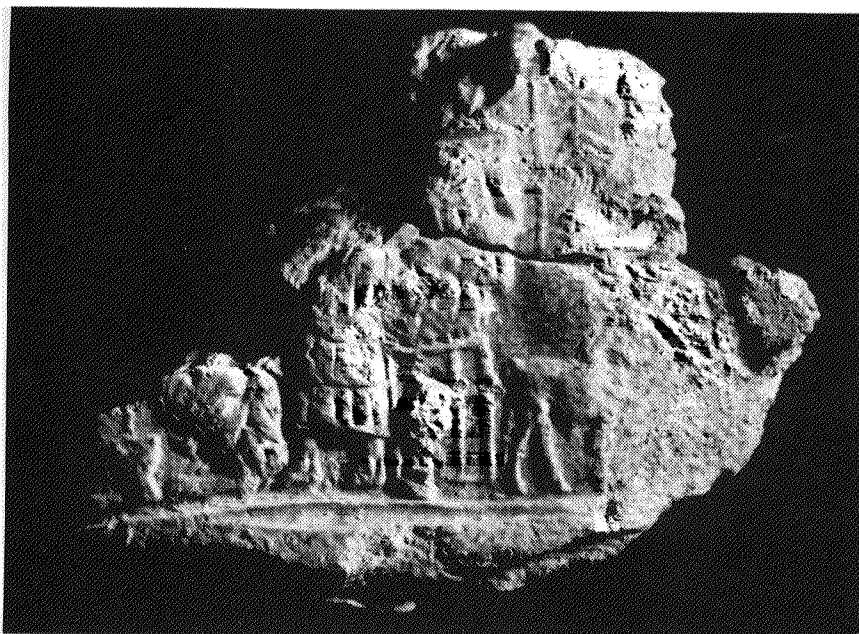


III. 1. Stone lion from temple B (B1.164).

III. 2. Detail of seal impression (k2) showing lion at foot of throne and vessel placed in front (A1.455).





A

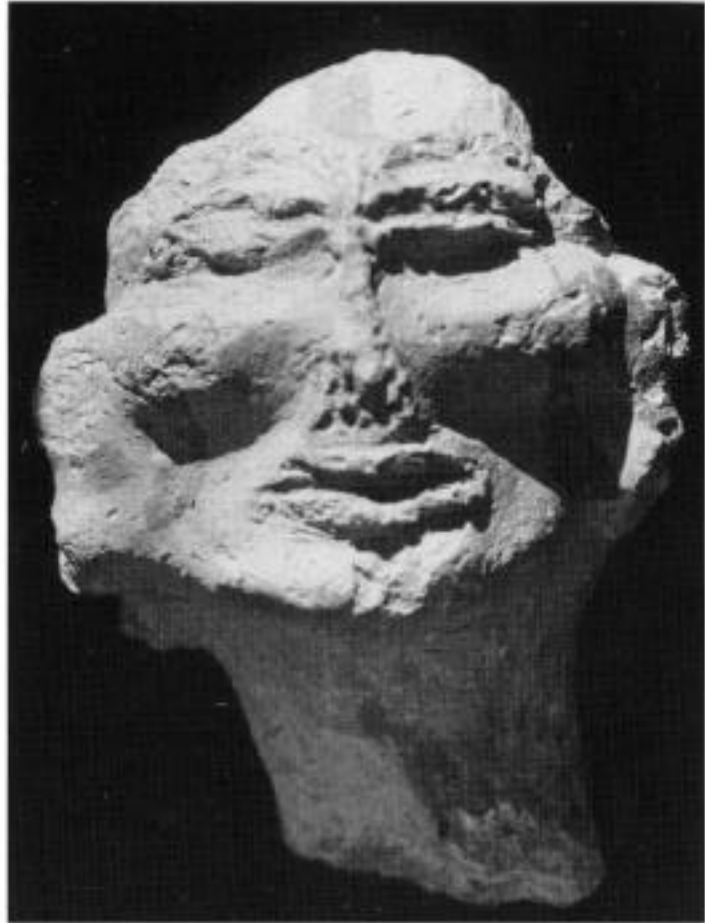


B

Ills. 3-4. Clay head of bearded man (A1.23).
Ill. 3. Side A: front and left. Ill. 4. Side B: right.

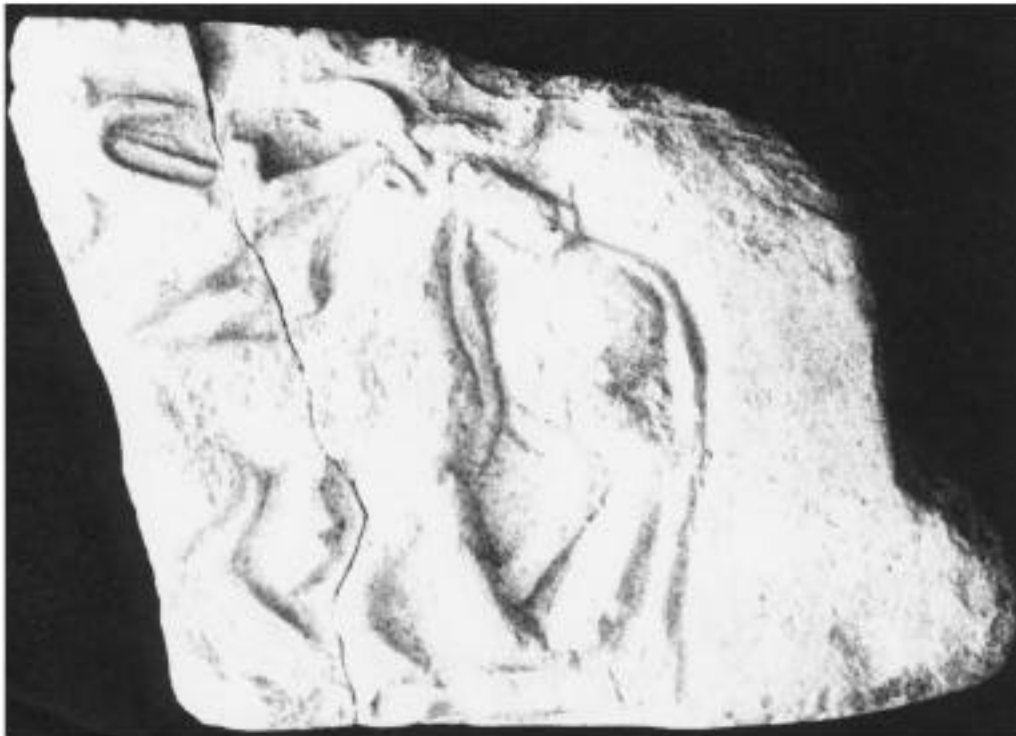


Ill. 5. Bearded man: frontal view.



Ill. 6. Painted clay head from C1.1.

A

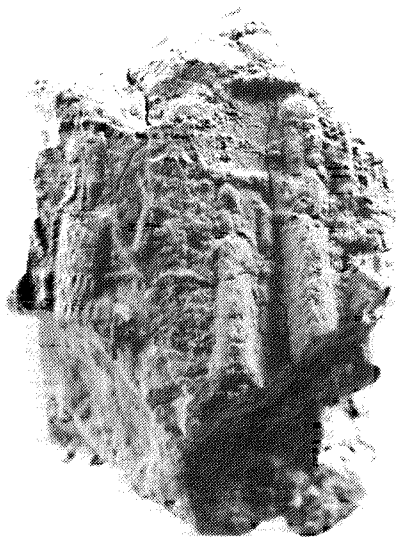
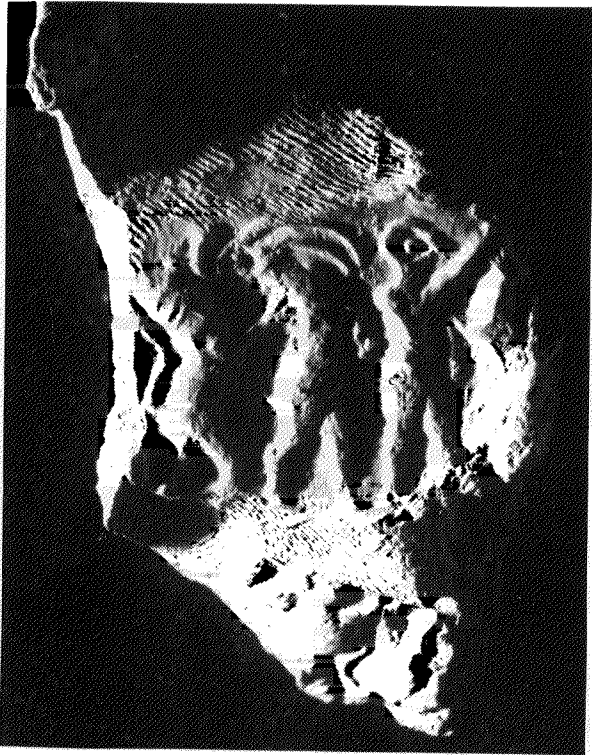


III. 7. Round-topped double-sided stele (B1.19).
Side A: Animal herd in motion. Side B: Plowman.

B

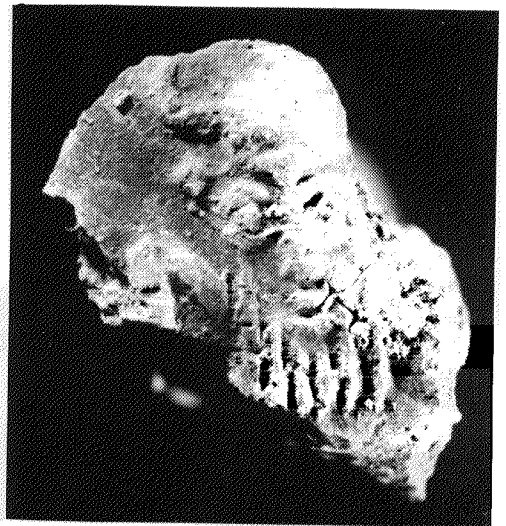


8



10

11



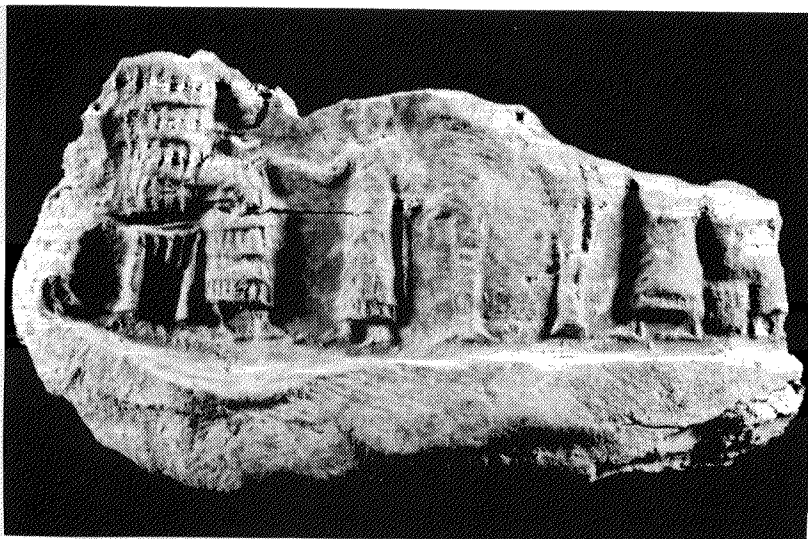
III. 8. Seal impression of Innin Shadu, h4 (A1.98).

III. 9. Impression of q6 (A5.76).

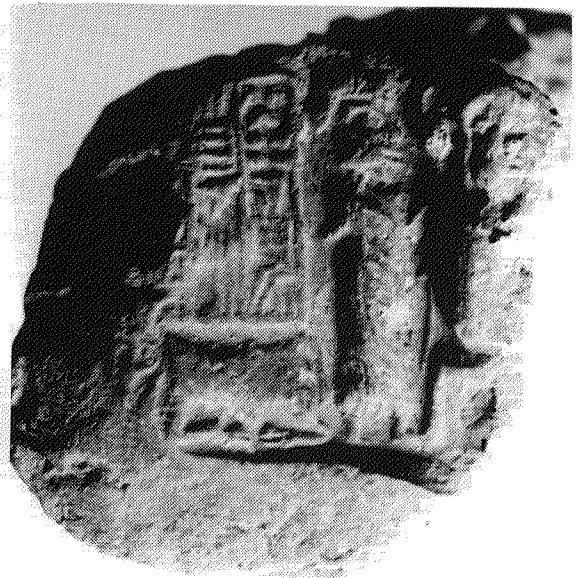
III. 10. Detail of queen and her daughter in q4 (A5q928.7).

III. 11. Human-headed bull under the inscription of h1 or h2 (A5.61).

III. 12. Detail of body of bull and attendant in h1 (A5.186).

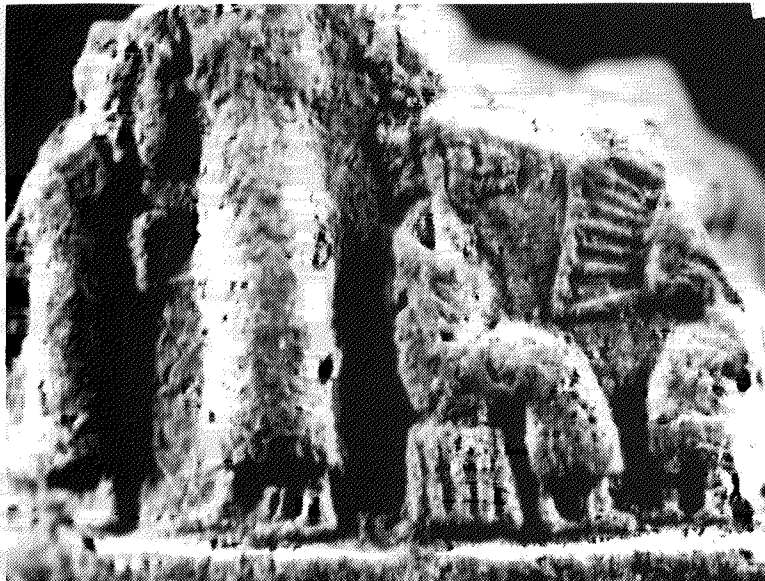


9



12

13

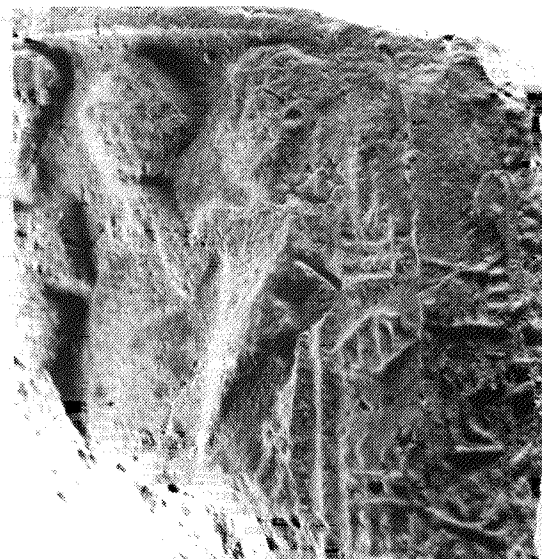


14

- Ill. 13. Detail of singer and lyre in q4 (A5.50).
 Ill. 14. Detail of assistant cook in h3 (A1q962.6).
 Ill. 15. Detail of boar under the inscription in q3 (A1.390).
 Ill. 16. Detail of banquet scene (A5.91).
 Ill. 17. Detail of attendant holding a ball of thread in k1 (A5.163).



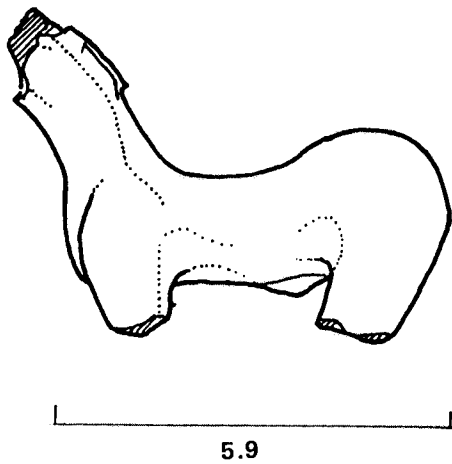
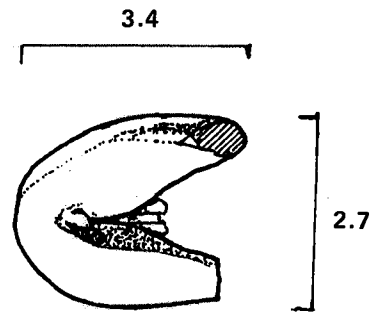
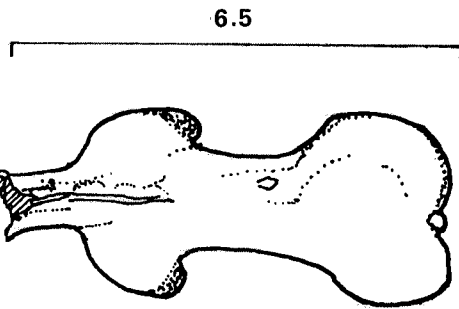
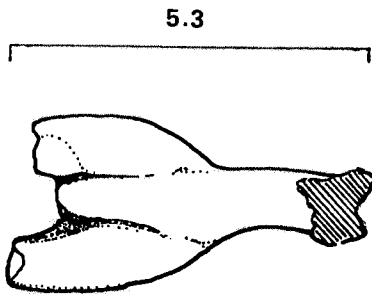
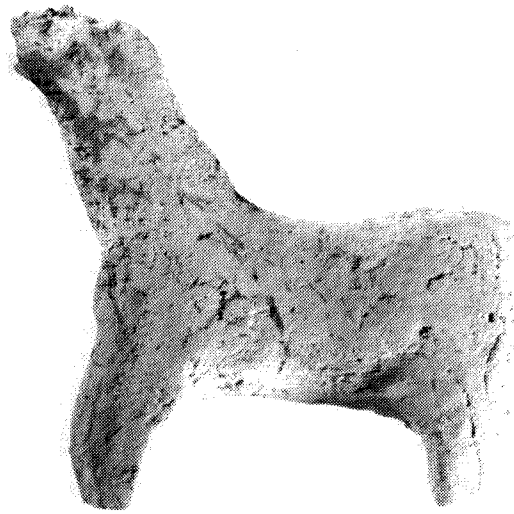
16



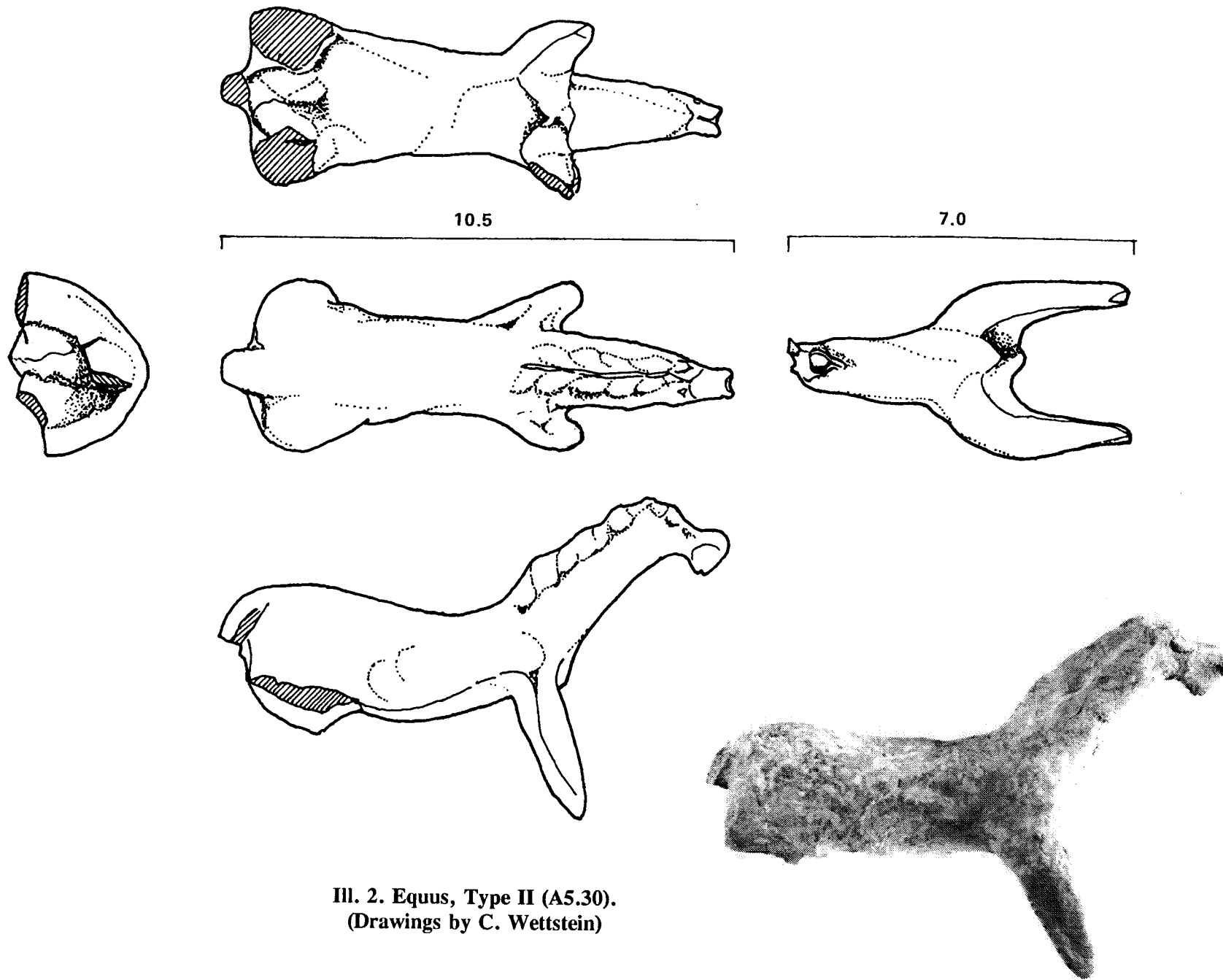
17

15

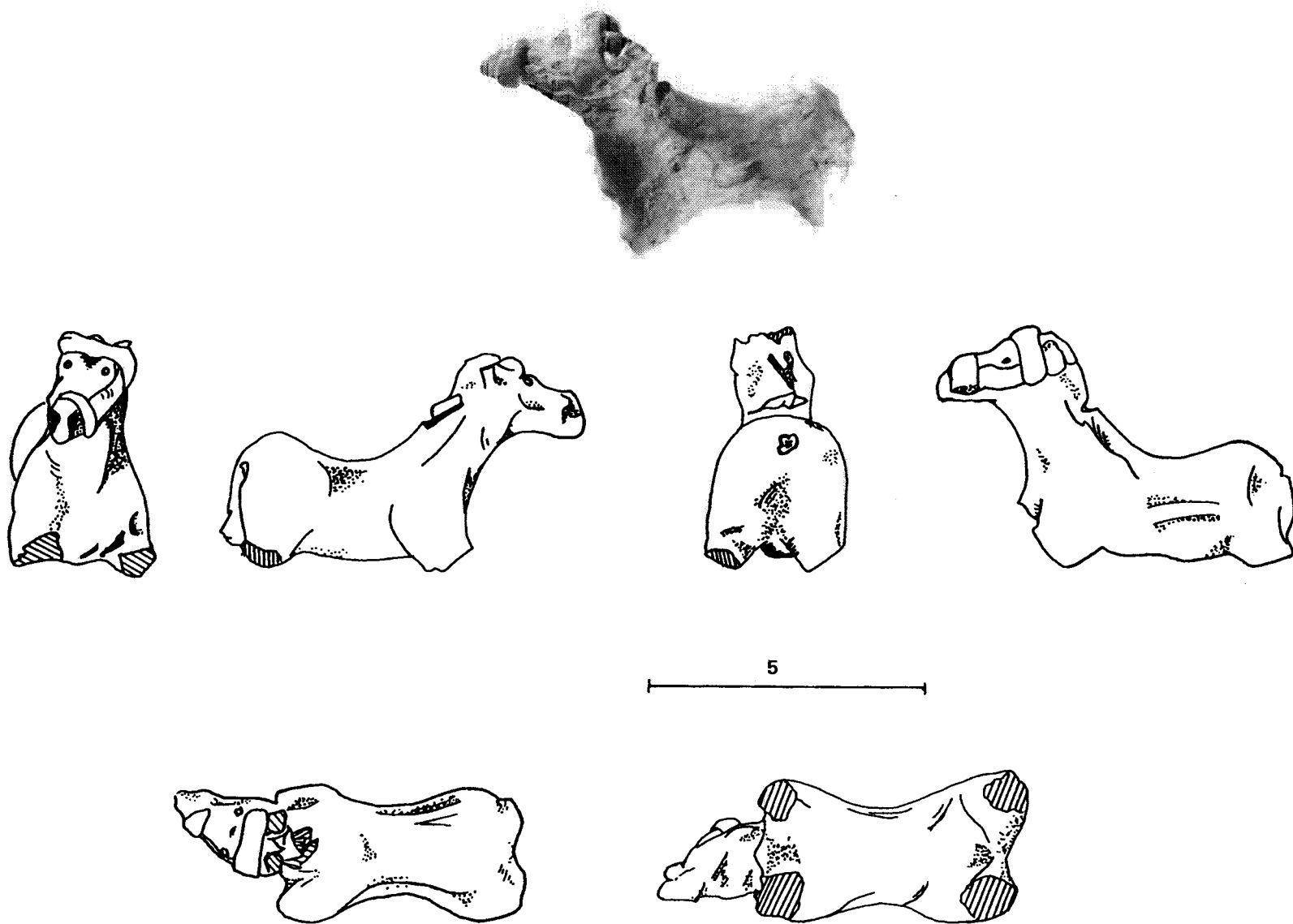




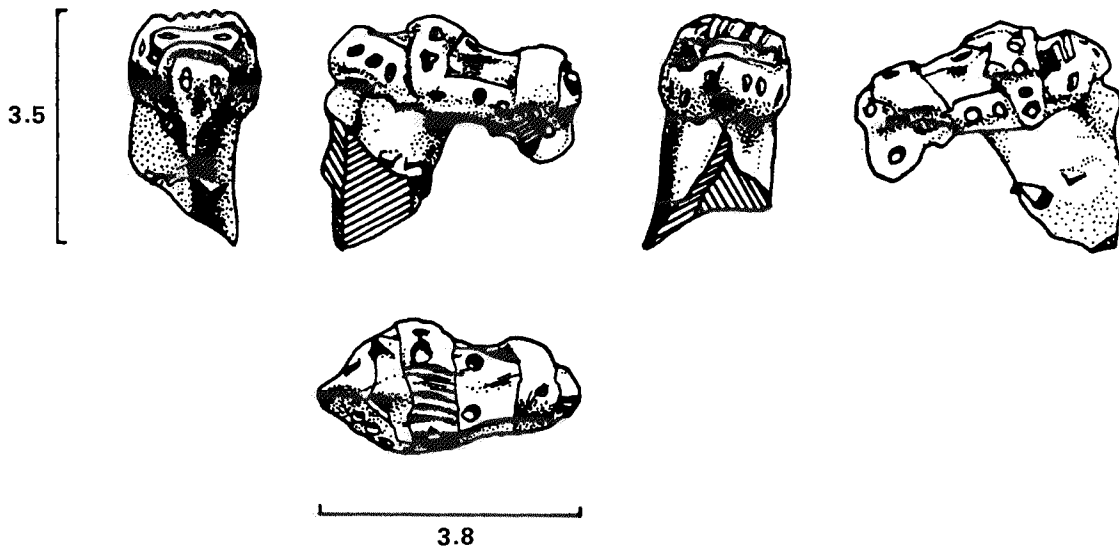
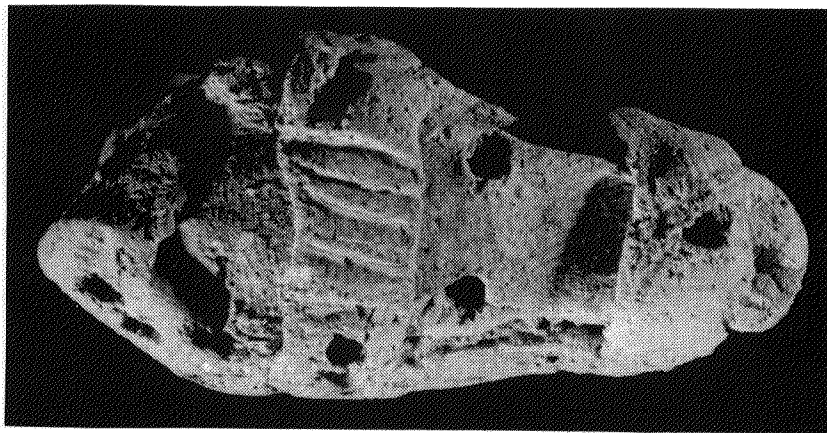
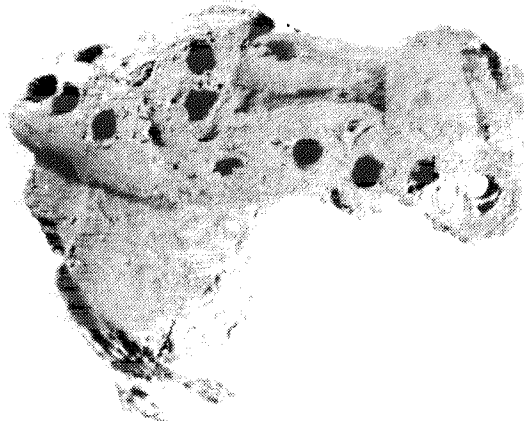
Ill. 1. Equus, Type I (A6.238).
(Drawings by C. Wettstein)



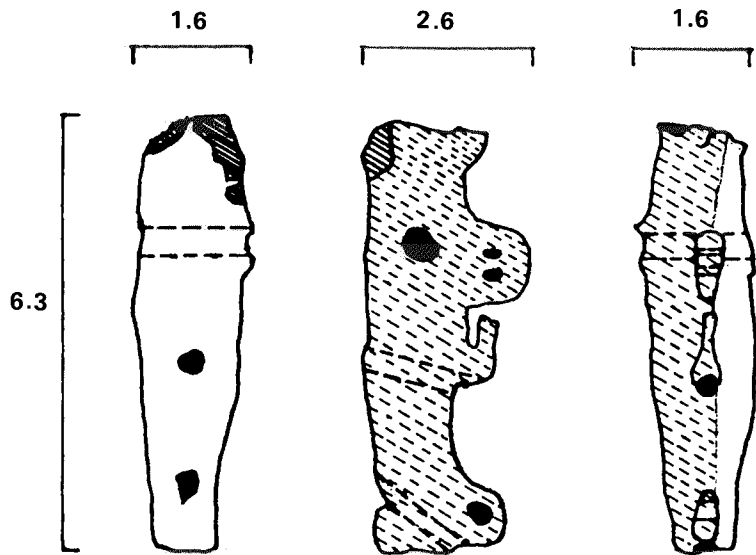
Ill. 2. Equus, Type II (A5.30).
(Drawings by C. Wettstein)



Ill. 3. Equus, Type III (A5q815-f).
(Drawings by E. Besson)

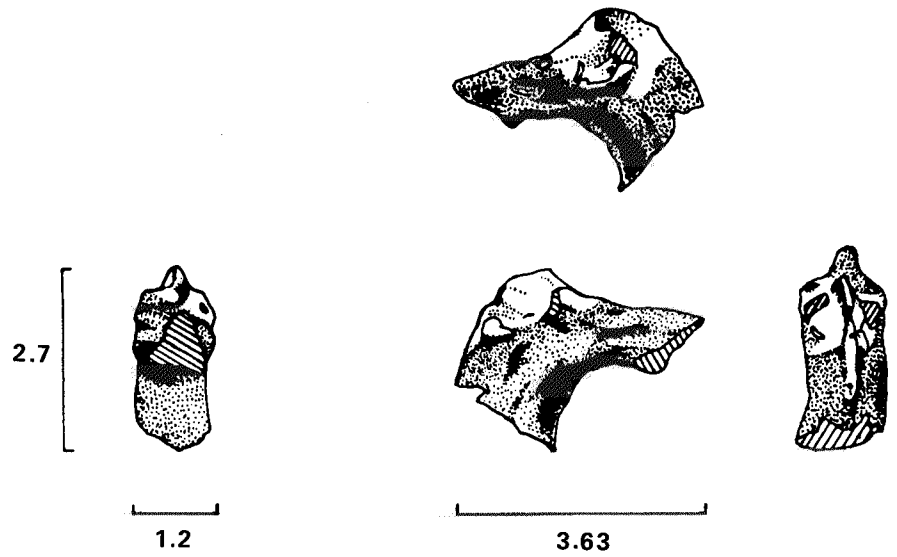


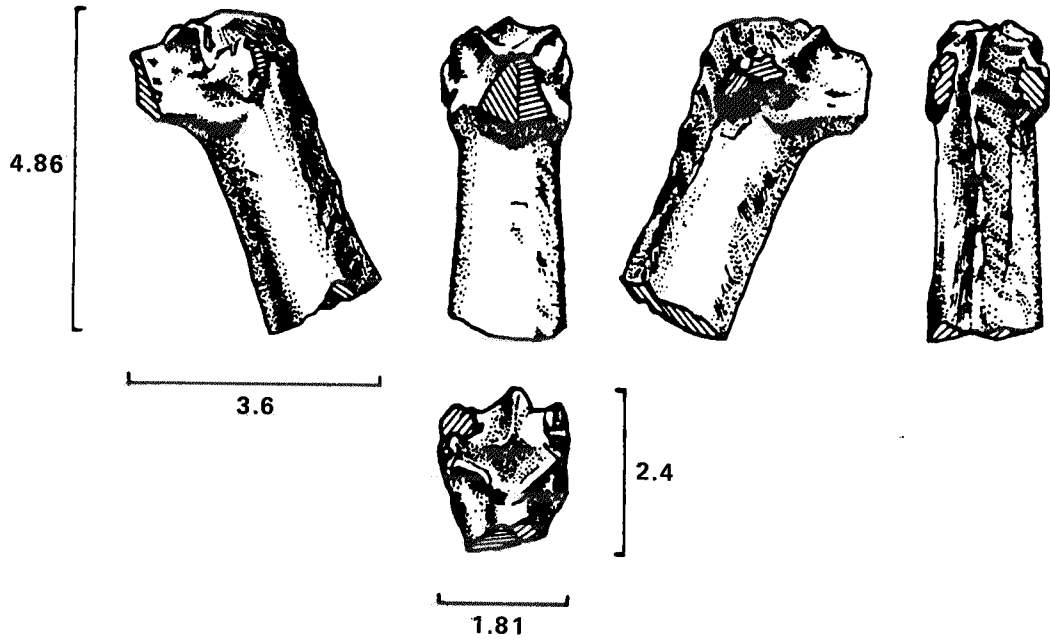
Ill. 4. *Equus*, Type III (K3.16).
(Drawings by P. Pozzi)



Ill. 5. *Equus* (BH383.2).
(Drawing by C. Wettstein)

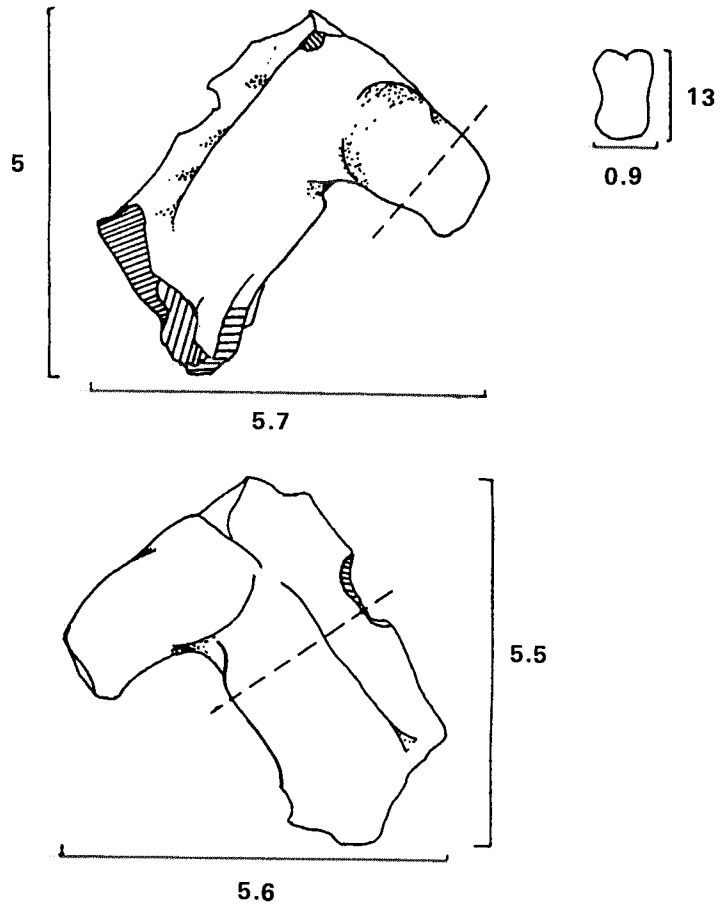
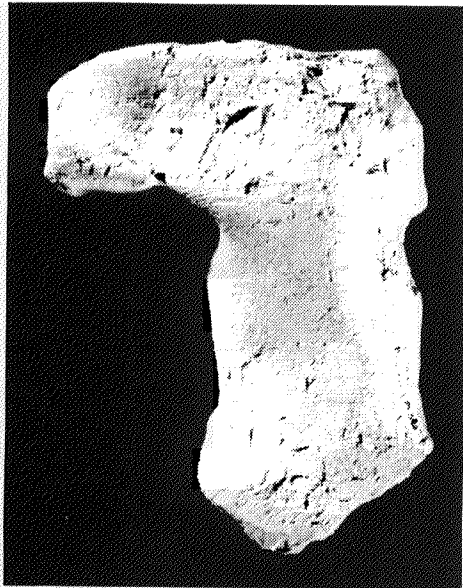
Ill. 6. *Equus* (A1q960.8).
(Drawing by E. Besson)





Ill. 7. Equus (A5q63-f).
(Drawing by P. Pozzi)

Ill. 8. Equus (A1q836-f).
(Drawing by E. Besson)





Ill. 1. Lion (AO 19937) with stone tablet (AO 19938).



III. 2a. Stone tablet of Tish-atal (AO 19938) (obverse).



III. 2b. Stone tablet of Tish-atal (reverse).

Photographs copyright Christian Larrieu, courtesy of the Musée du Louvre, Département des Antiquités Orientales.